

## Gyeongseong Station Delivers the Modern Sensibility of Seoul

The history of the railroad of Korea started with the Gyeongin Line. In 1900, the Gyeongin Line began to reach Namdaemun Station, a wooden building known as the Namdaemun Stop. Eventually, 'Namdaemun Station' was changed to 'Gyeongseong Station,' and in September 1925, the South Manchuria Railways Company newly built a station in the Renaissance style. This was the inception of Gyeongseong Station and a symbol of modern architecture at the same time. In 1947, the name was again changed to 'Seoul Station.' Although part of the building was destroyed during the course of the Korean War in 1950, its tragic history is such that it has firmly established itself as a representative historic site of the modern history of Korea.

## From the train station to the space presenting the re-creation of culture in daily life

After Seoul Station was closed in 2004, a restoration project was carried out in 2009 that lasted for two years with the purpose of representing the internal scenes of the station from 100 years ago based on pictures taken at the time of establishing Gyeongseong Station. Thus, in August 2011, Seoul Station was restored to the Gyeongseong Station of 1925 by reinventing itself as the 'Culture Station Seoul 284,' and has since served as a life, art and cultural platform located in the center of Seoul.

## The Past, Present and Future Exist Together

Culture Station Seoul 284, a base to create culture that looks towards the future in coexistence with the past and the present, has a proud history of more than 100 years. By presenting a variety of programs based on art and culture, it serves as a platform where contemporary culture and the public connect and intersections among many different strata are established. Culture Station Seoul 284 has obtained its current name with the symbol as the central station of a cultural network and by designation as Historic Site No. 284. It is indeed an open arena for everyone to enjoy art and culture.

**Open Hours**  
It can be different for exhibitions and programs.

**Closed Day**  
Every Monday, New Year's Day(including Lunar New Year's Day), Chuseok.

\* When Monday is a holiday (including substitute holidays), it is open on Monday but closed on Tuesday, the following day.

\* Culture Station Seoul 284 is closed when no exhibition or events are held. Please visit the homepage to check on the specific schedule.

TEL 02-3407-3500

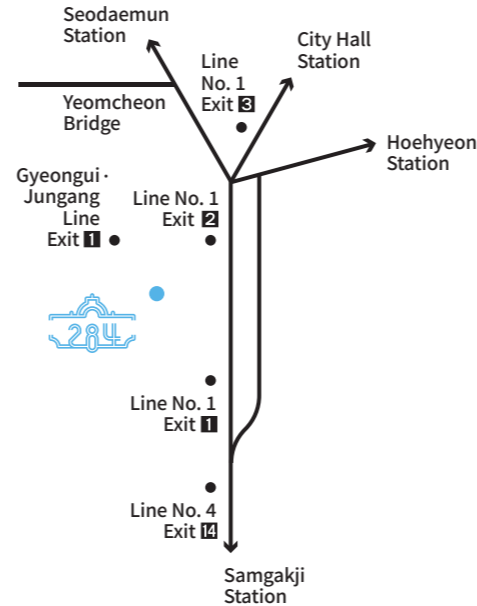
seoul284.org  
instagram.com/culturestationseoul284  
youtube.com/seoul284official



**Culture Station Seoul 284,**  
1, Tongil-ro, Jung-gu, Seoul,  
Republic of Korea (04059)

Subway, Seoul Station Exit 2  
Line NO.1, Line No.4

Railroad, Seoul Station Exit 1  
(to Seoul Station Plaza),  
Gyeongui - Jungang line



\* Stroller or wheelchair rental is available at the information desk on the 1st floor.



**July 8, 1900**

Beginning of the operation of Namdaemun Stop

**March 24, 1905**

Name changed to Namdaemun Station

**January 1, 1923**

Name changed to Gyeongseong Station

**September 30, 1925**

Completion of the construction of Gyeongseong Station (former Seoul Station)

**November 1, 1947**

Name changed from Gyeongseong Station to Seoul Station

**December 30, 1957**

Completion of the construction of the southern district of Seoul Station

**February 14, 1969**

Completion of the construction of the western district of the Station

**September 18, 1975**

Completion of the construction of the western station of the Korea Railroad

**September 25, 1981**

Designate as Historic Site No. 284

**April 1, 2004**

Opening of Korean Train eXpress (KTX) and the closure of the former Seoul Station

**July 24, 2007**

Shift of management from Korea Railroad Corp. to the Cultural Heritage Administration

**August 26, 2009**

Restoration of the origin of the former Seoul Station and the holding of the groundbreaking ceremony to signify it becoming a cultural space

**August 8, 2011**

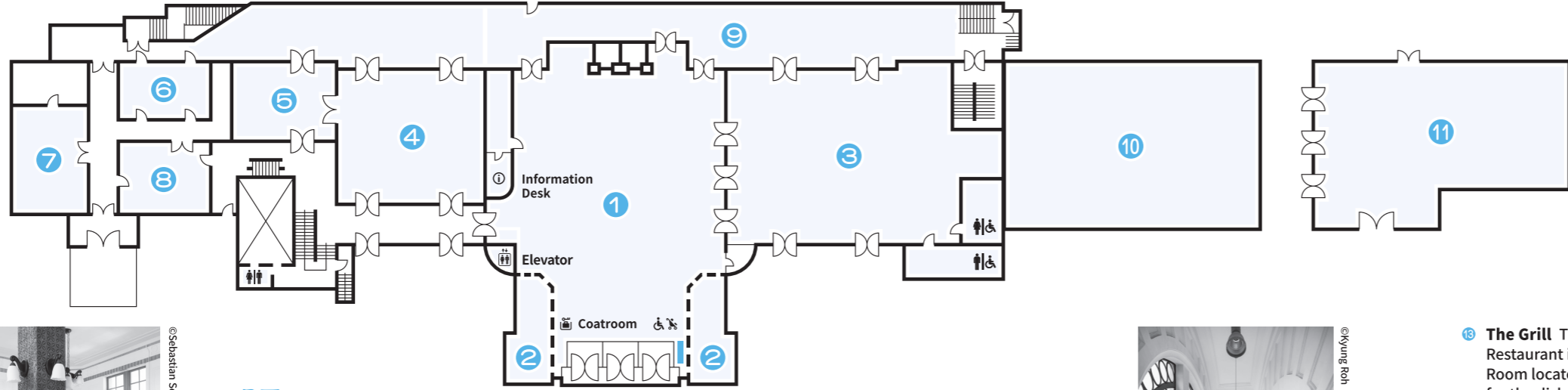
Completion of Culture Station Seoul 284

**August 9, 2011**

Opening of Culture Station Seoul 284 to the public

# Floor Guide

1F



# Major Programs

## Exhibition

The planning exhibition which utilizes the temporal and spatial characteristics for the space of Seoul Station (former Culture Station Seoul 284) is hold twice or more a year. The collaborative exhibition which embraces a variety of genres as craft, architecture, media, etc. is also hold once or twice a year.

\* Please check the homepage for the specific schedule of Culture Station Seoul 284.

## Permanent Programs

**Space Tour:** Seoul Station (former Culture Station Seoul 284)'s building which was established in 1925 is the oldest railway building and modern heritage. You can look the architectural, historical, and cultural values of the old Seoul station's building with docent's explanation and enjoy the story which the space has while you move between the inside and outside of Culture Station Seoul 284.

\* Apply for the tour program at the homepage of Culture Station Seoul 284.

**Restoration Exhibition (Permanent Exhibition):** This Restoration Exhibition Hall, located at the previous barber shop and restroom, provides the restoration process of the former Seoul Station at a glance. Through the artifacts and materials collected from the restoration process, this exhibition introduces the history of Culture Station Seoul 284.

\* It is operated only when exhibitions and events are hold.



@Kyung Roh

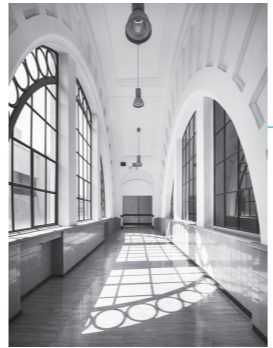
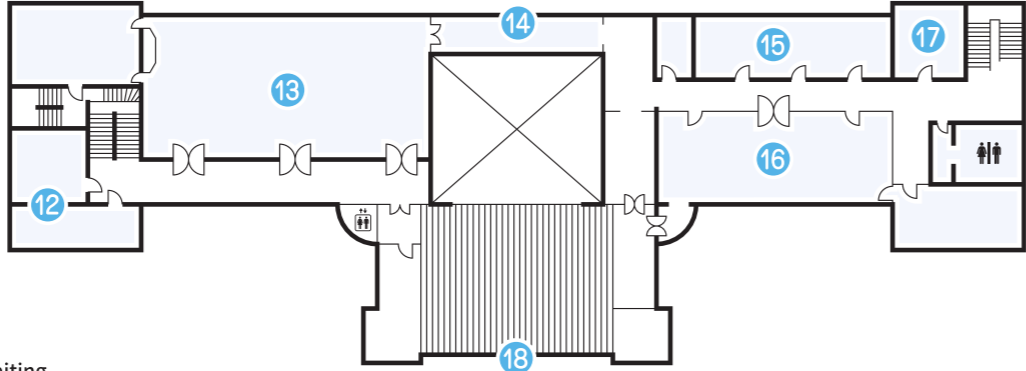


@Sebastian Schultzer

- 1 **Central Hall** The space features 12 granite columns that present the beauty of the stone construction with half-circled windows in the east and west and upper stained-glass.
- 2 **Ticket office** Located on both sides of the main entrance, this used to be an entrance and exit.
- 3 **3<sup>rd</sup> Class Waiting Room**  
A waiting room for passengers who have purchased 3rd class tickets and was open to the public from the plaza. On the days of Gyeongseong Station, a cafeteria was located in this waiting room.
- 4 **1<sup>st</sup> and 2<sup>nd</sup> Class Waiting Room**  
A waiting room for passengers who have purchased 1<sup>st</sup> and 2<sup>nd</sup> class tickets with impressive and splendid decorations.

- 5 **Waiting Room for Ladies** A waiting Room for female passengers who have purchased 1st and 2nd class tickets with impressive wooden decorations.
- 6 **Stationmaster's Office** A space where the stationmaster carried out his daily tasks.
- 7 **VIP Lounge** With luxurious decorations and a high-end interior design, this was the waiting area for the distinguished guests of the nation such as former presidents.
- 8 **Spare Room for VIP** A space for the attendants of distinguished guests.

2F



@Kyung Roh

- 9 **West Hallway** As a hallway through which passengers used to reach the platform to take the train, it was a space connecting the waiting room and the platform.
- 10 **TMO** Signifying the Transportation Movement Office, it serves as a café for the visitors.
- 11 **RTO** It was used as a baggage reclaim and railroad transportation office of US transportation unit, nowadays, is utilized as the space where show a variety of programs like performances, markets, lectures.
- 12 **Restoration Project Exhibition Hall** Originally used to be a barber shop and a restroom, it is a place to exhibit the history of Culture Station Seoul 284 as a permanent exhibition.

- 13 **The Grill** The first Western-style Restaurant in Korea. At the preparation Room located in left of it, the first elevator for the dishes in Korea was installed.
- 14 **Small Restaurant** Located beside the Grill, it was a place where passengers were able to enjoy dishes while watching the trains pass by.
- 15 16 17 **Seminar Room, Meeting Room, Waiting Room** A space for the previous station employees to use for office work.
- 18 **Clock for a Post Horse**  
With a diameter of 160cm, it was installed when Gyeongseong Station was established in 1925 and recorded as the largest clock in Korea by the late 1970s.



@Kyung Roh